



YETDA INDUSTRY LTD.

5mm White LED Lamps S500NGW4G

5mm with Super-bright Dice.
Encapsulated with Water Clear Color Package.
Long Leads.

Absolute Maximum Ratings :

Parameter	Maximum Rating	Unit
Peak Forward Current	120	mA
Continuous Forward Current	30	mA
Operating Temperature Range	- 30 to + 85	
Storage Temperature Range	- 30 to + 100	
Lead Soldering Temperature	260 for 3 seconds 1.6mm(0.063 inch) from body	

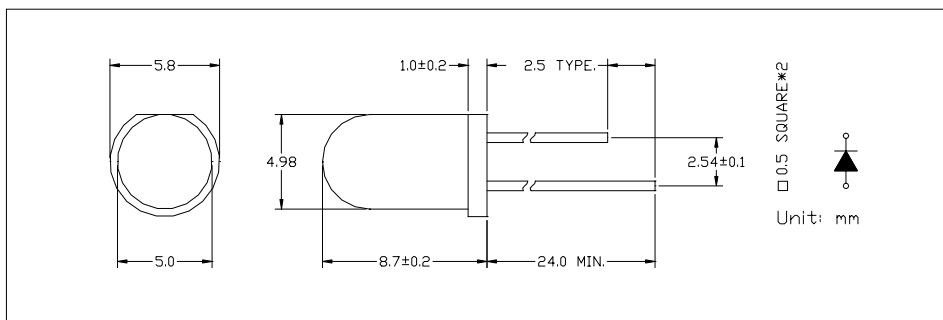
Electro-Optical Characteristics (Ta = 25)

Parameter Radiant	Test Condition	Symbol	Min.	Typ.	Max.	Unit
Forward Voltage	If = 20mA	Vf	3.5	4.0	5.0	V
Reverse Current	Vr = 5V	Ir			10	uA
Luminous Intensity	If = 20mA	Iv		6500	10500	mcd
Spectral Bandwidth	If = 20mA	$\Delta\lambda$				nm
Wavelength	If = 20mA	X		0.31		
		Y		0.32		
Half View Angle	If = 20mA	2 θ 1/2		30		deg

Please refer to CIE1931 Chromaticity Coordinate diagram

Package

Item: 500



20090427